

Theory and practice: farmed land

Farmland is the main land use in the Chilterns covering 60% of the National Landscape

Covers a wide array of habitats

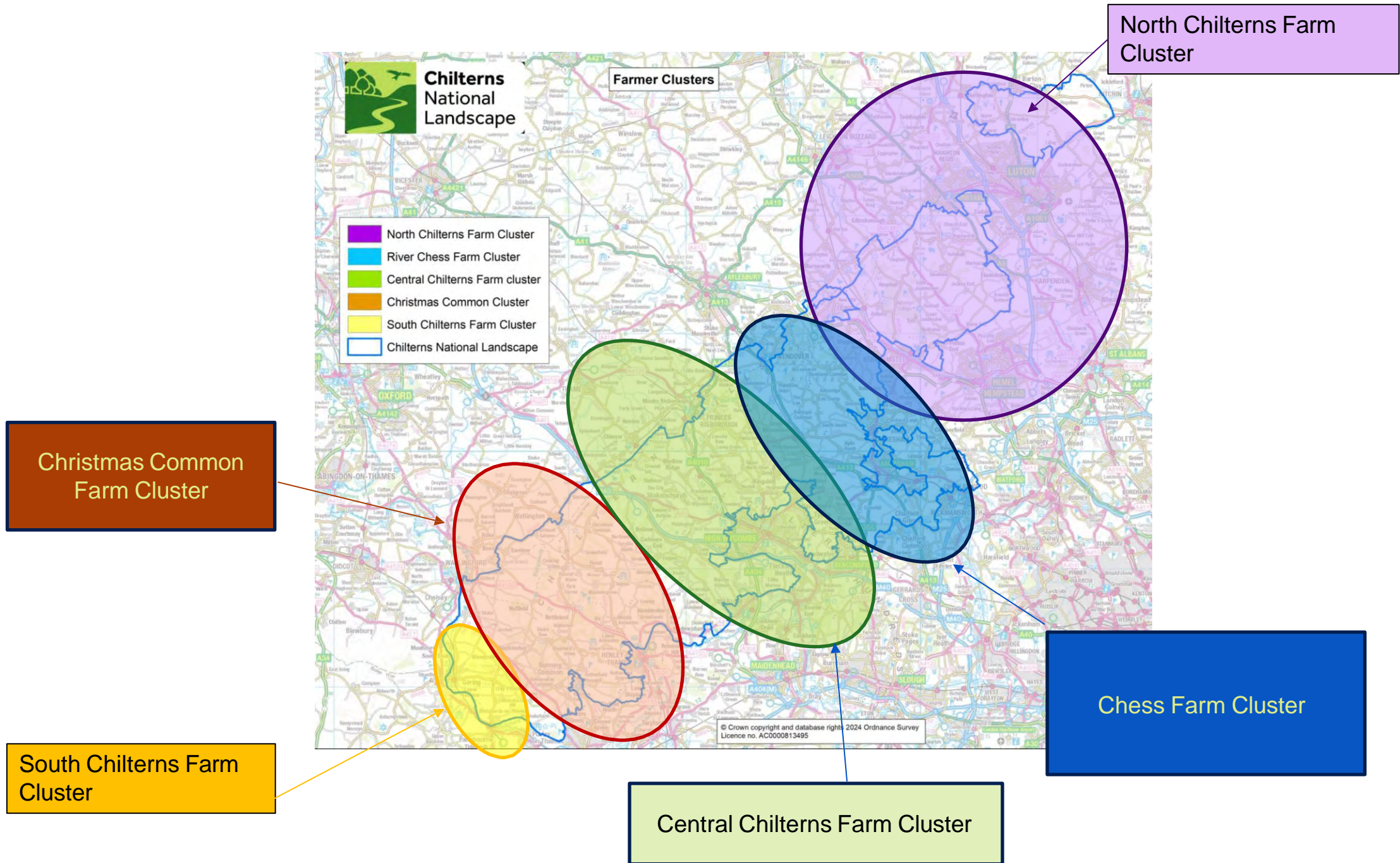
Working with farmers and landowners to achieve nature recovery is key to any successful delivery

Farmed land contains different habitats for nature recovery depending on location in landscape. Amongst the priorities are:

- Species-rich grassland
- Hedgerows and hedgerow trees
- Field margins
- Scrub mosaic habitat ('transition & edges')
- Drainage ditches and ponds
- Wetlands (especially in Thames corridor)

Chilterns is also a stronghold of nationally rare arable plants (previously considered as weeds)





Monitoring & assessment: how do we know if we are successful?

PL TOFs dataset will enable us to track nature recovery at national landscape scale but often uses proxy data
Citizen Science and Remote Sensing innovations both offer opportunities for monitoring nature recovery in Chilterns National Landscape
Involving people spreads the word and ambition & comes with added health-benefits



Landscape-scale impact for nature –

How farmers in the Central Chilterns Farmer Cluster are making it happen

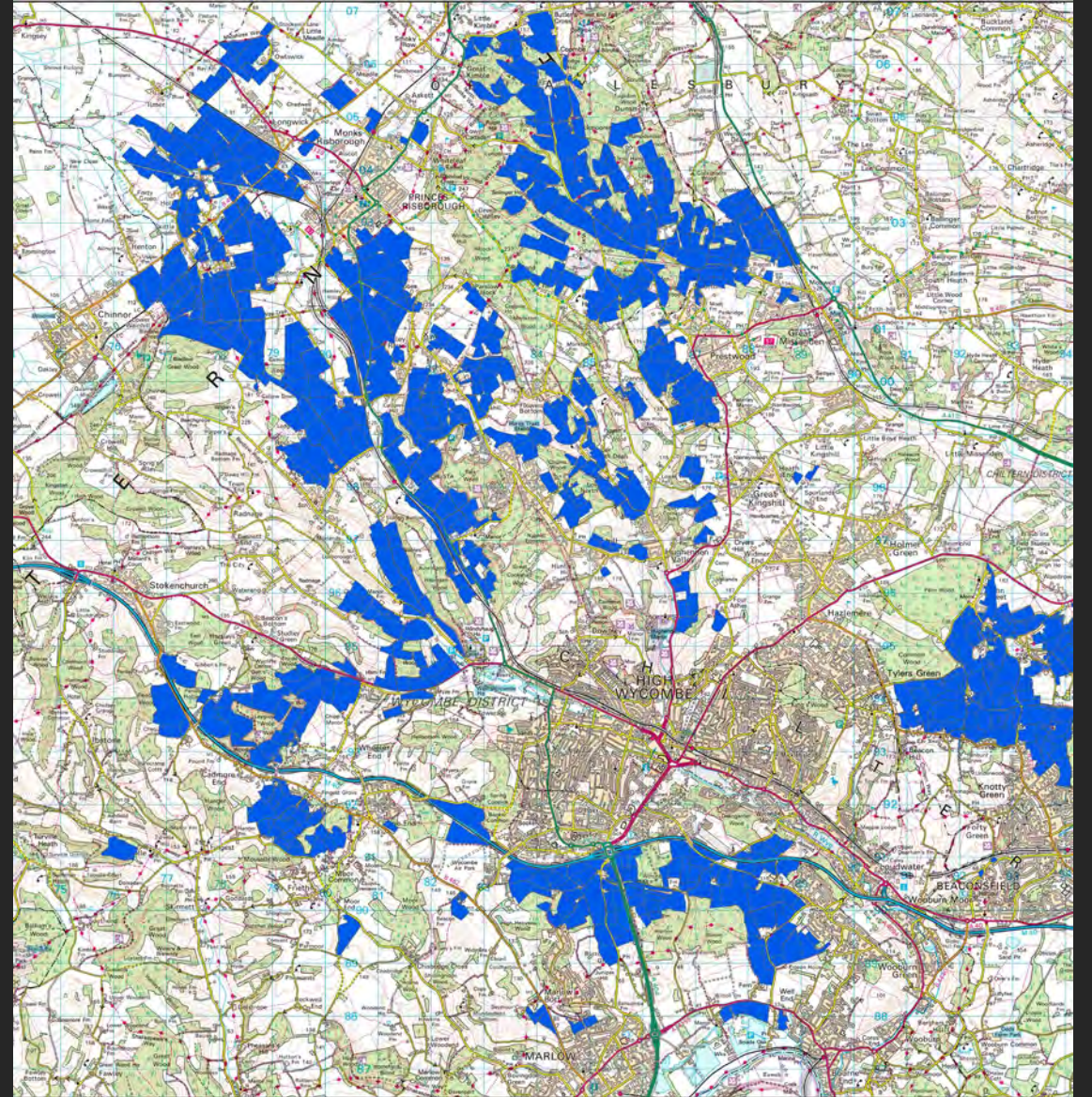


Chilterns
National
Landscape



CHILTERNS
LANDSCAPE PARTNERSHIP





GWCT
BIG FARMLAND
BIRD COUNT

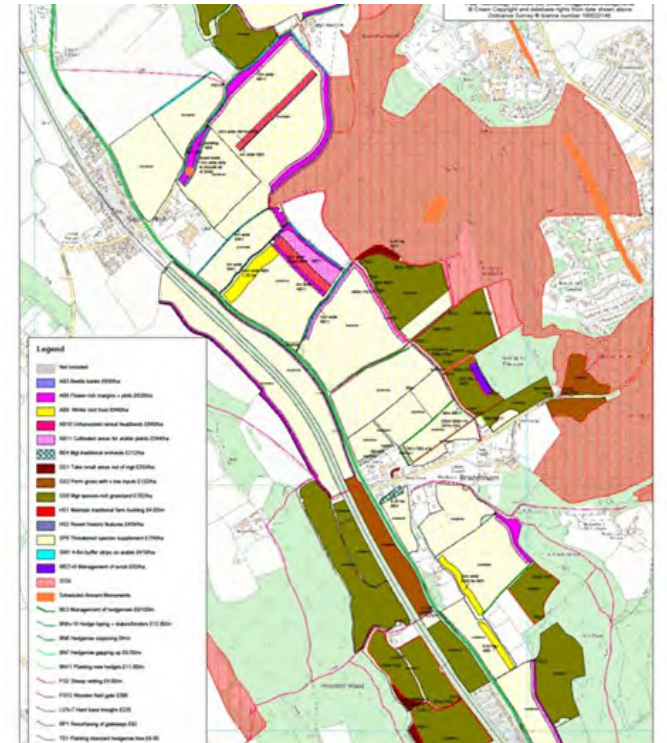




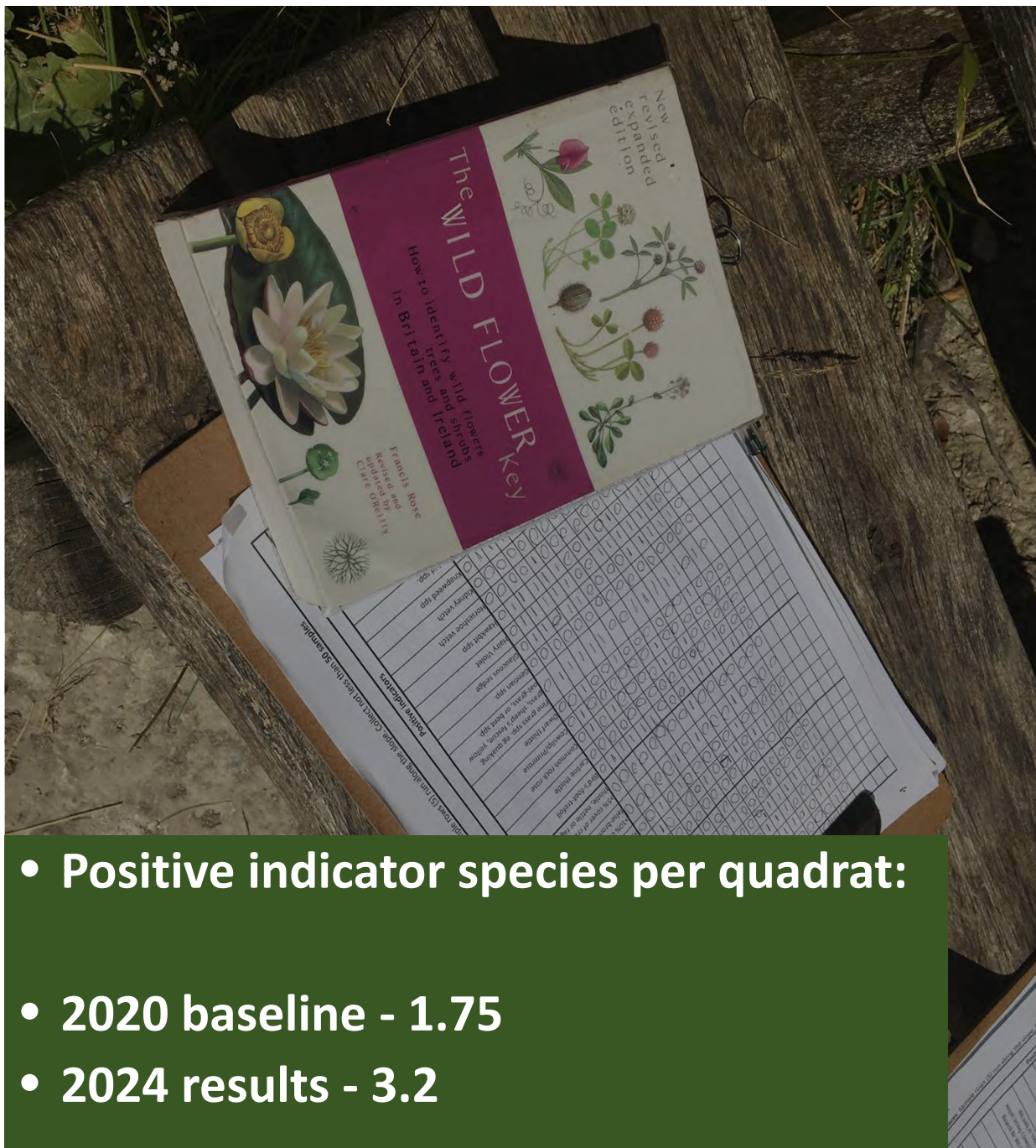
**sundew
ECOLOGY**
Conservation Management
and Ecological Consultancy

Old Callowdown Farm
Map 1: scrub to be cut and removed

Base mapping © Google Maps







- Positive indicator species per quadrat:
- 2020 baseline - 1.75
- 2024 results - 3.2





**UK Centre for
Ecology & Hydrology**



**ROTHSCHILD
FOUNDATION**





**Centre for
Ecology & Hydrology**

NATURAL ENVIRONMENT RESEARCH COUNCIL



Buckinghamshire and Milton Keynes
Environmental Records Centre

Berkshire
Buckinghamshire
Oxfordshire



BTO

Looking out for birds



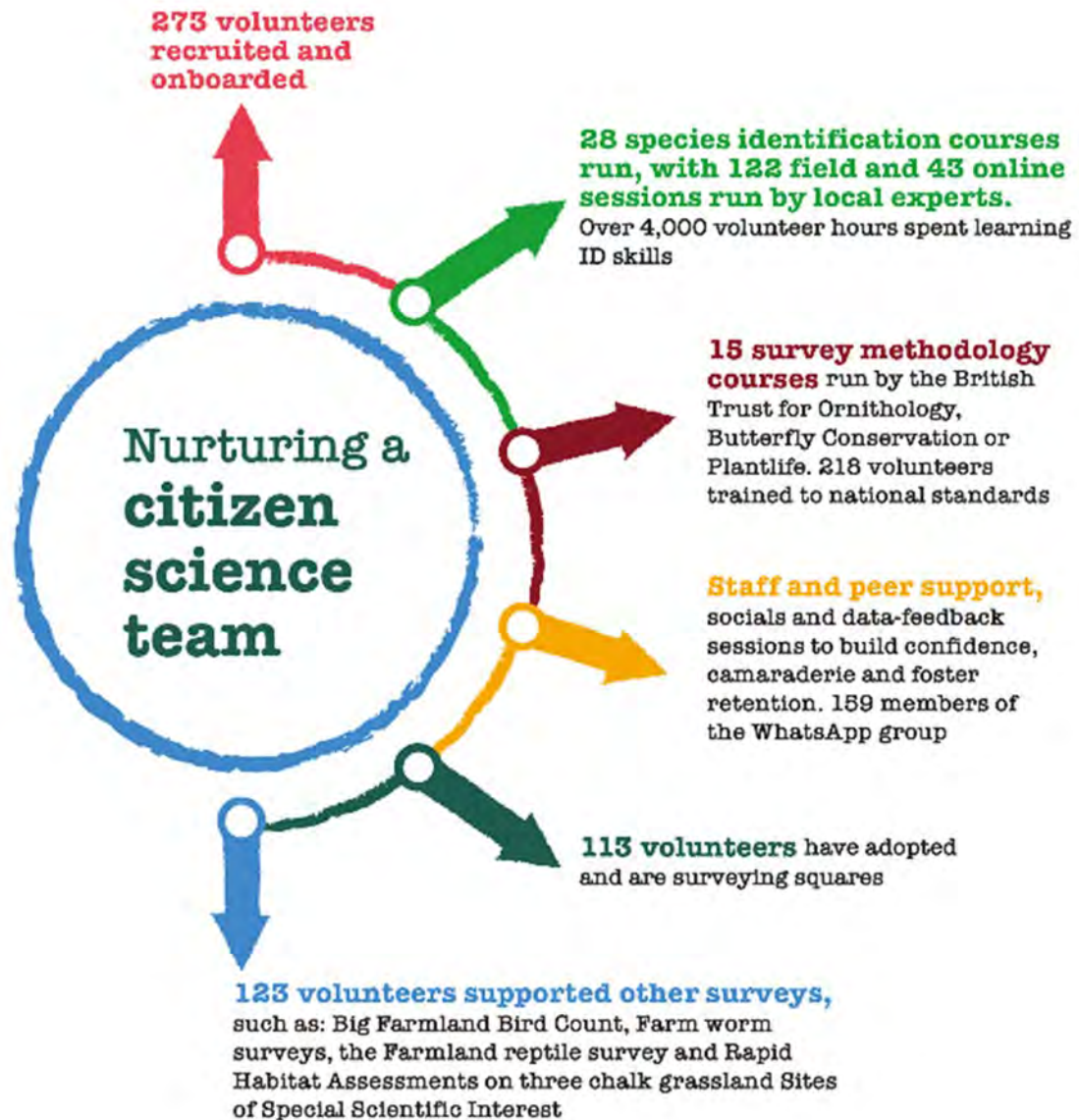
**Butterfly
Conservation**

Saving butterflies, moths and our environment

Plantlife

Rebel restoration







BBS index for England and South East England 1994–2023

