



NATURE SUMMIT

2025

Welcome



Bucks & MK NEP

Our partnership work – nature recovery

Nature Summit 23rd June 2025

Local Nature Partnerships



Encourage and enable cross-sector working and focus

- Agree local strategies for nature
- Convene expert groups – knowledge-share; case-studies and good practice
- Facilitate delivery – e.g. joint projects; support project bids; represent NEP on project / programme steering groups

Support landscape-scale / strategic nature recovery

Strive for wider benefits to all – social, economic and environmental: people, health, food/farming, nature, economy

Speak with one voice - represent environment in decision-making: e.g. respond to national and local consultations on planning and environmental policy

Support and encourage local delivery of national environmental policies

Bucks and MK Natural Environment Partnership: the NEP

- Formally recognised by Defra in 2012
- Landscape-scale
- Multi-sector, joined-up working
- Nature improvement + benefits to all
- Some of the partners we work with regularly...
- Buckinghamshire Council currently hosts the NEP – we are not separately-legally constituted



Buckinghamshire and Milton Keynes
Environmental Records Centre



The NEP's areas of focus



Biodiversity and Nature Recovery Delivery

Local Nature Recovery Strategy

Nature Finance

Policy voice

Connecting people and nature



NEP Nature Summit – LNRS update

David Sutherland



LNRS: a new system of spatial strategies for nature

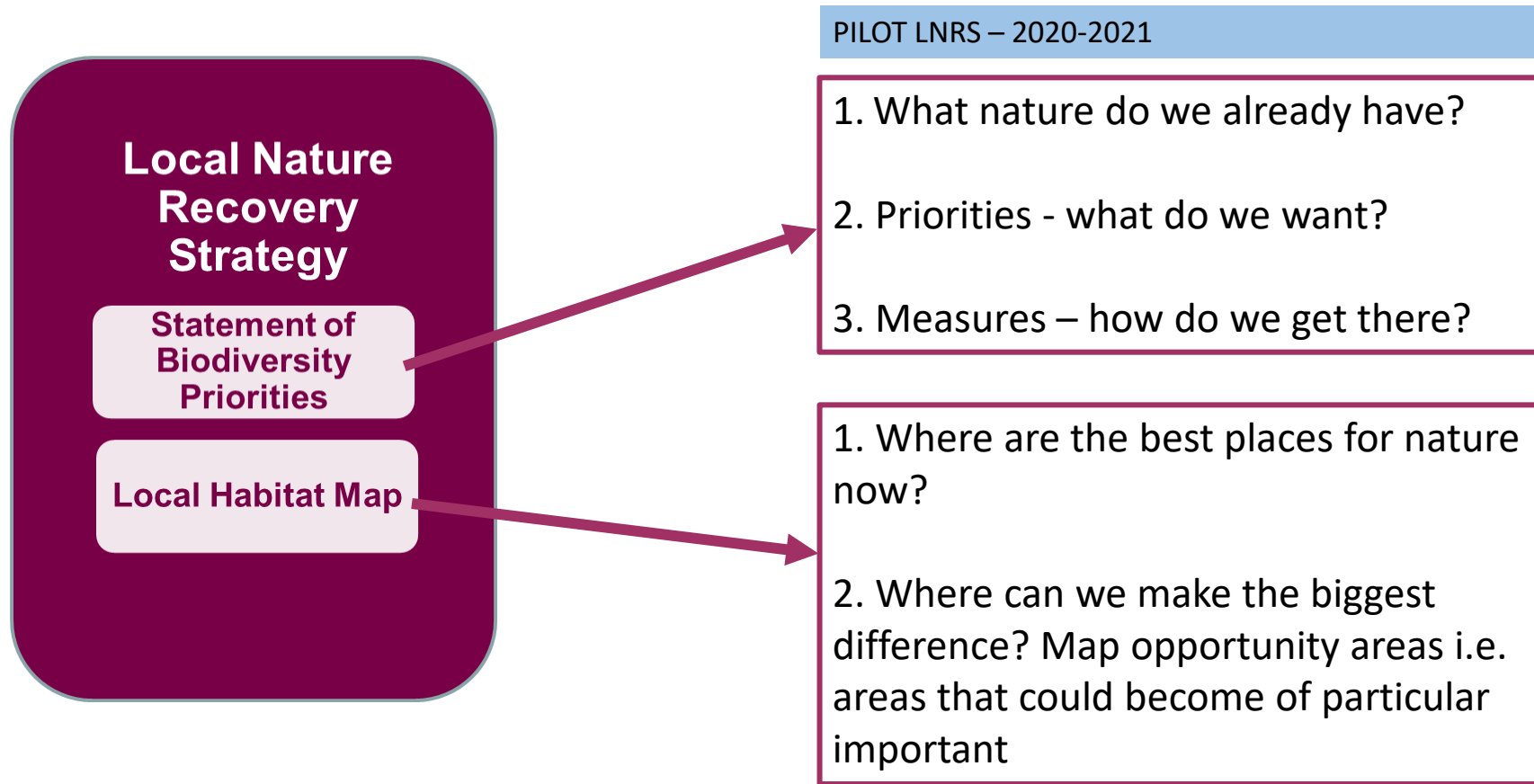
- Required by the **Environment Act 2021**
- **Agree priorities & measures** for nature's recovery and wider environment
- Mapped **“areas that could become of particular importance for biodiversity”**
- **48 LNRSs** will cover the whole of England
- Locally-led by **“Responsible Authorities”**
- Updates **every 5 years**



How does government intend LNRs to be used?

- **A shared creation** - working together on opportunities to deliver a wider vision for nature's recovery
- **Guide mandatory biodiversity net gain investments.**
- **Channel investment into local priorities** for protection and enhancement from both private and public
- **Evidence base for local planning authorities as part of local plan** - understand locations important for conserving and enhancing biodiversity and those that could become of particular importance

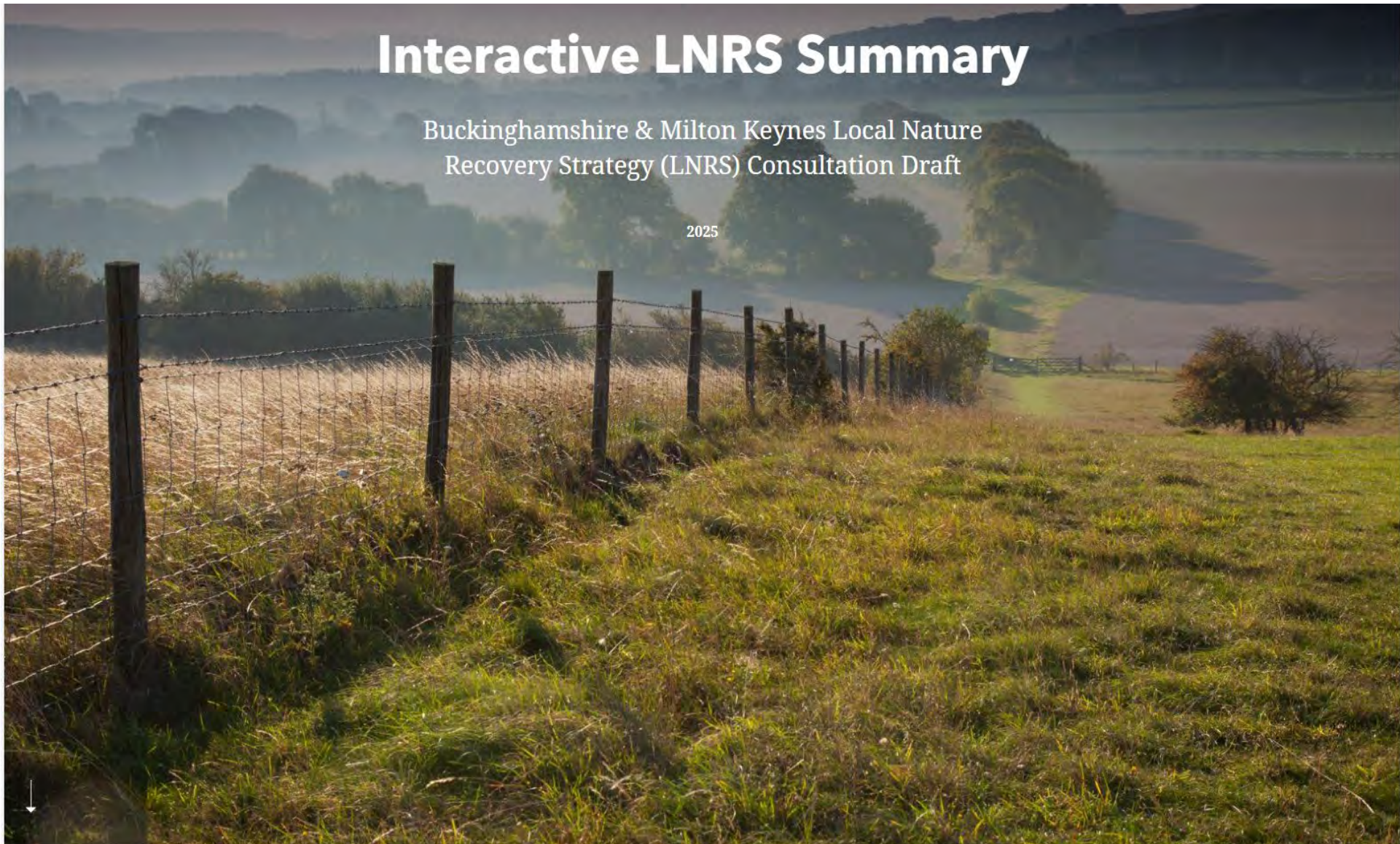
What does the Local Nature Recovery Strategy consist off?



Interactive LNRS Summary

Buckinghamshire & Milton Keynes Local Nature
Recovery Strategy (LNRS) Consultation Draft

2025



1. Our LNRS - What and why 2. Our LNRS Outputs 3. Using the LNRS 4. LNRS Aims 5. Nature in Bucks and MK 6. Priorities and Measures 7. Important Species 8. Next : [→](#)

Bucks and MK Habitat Map - Interactive mapping tool



Milton Keynes
City Council

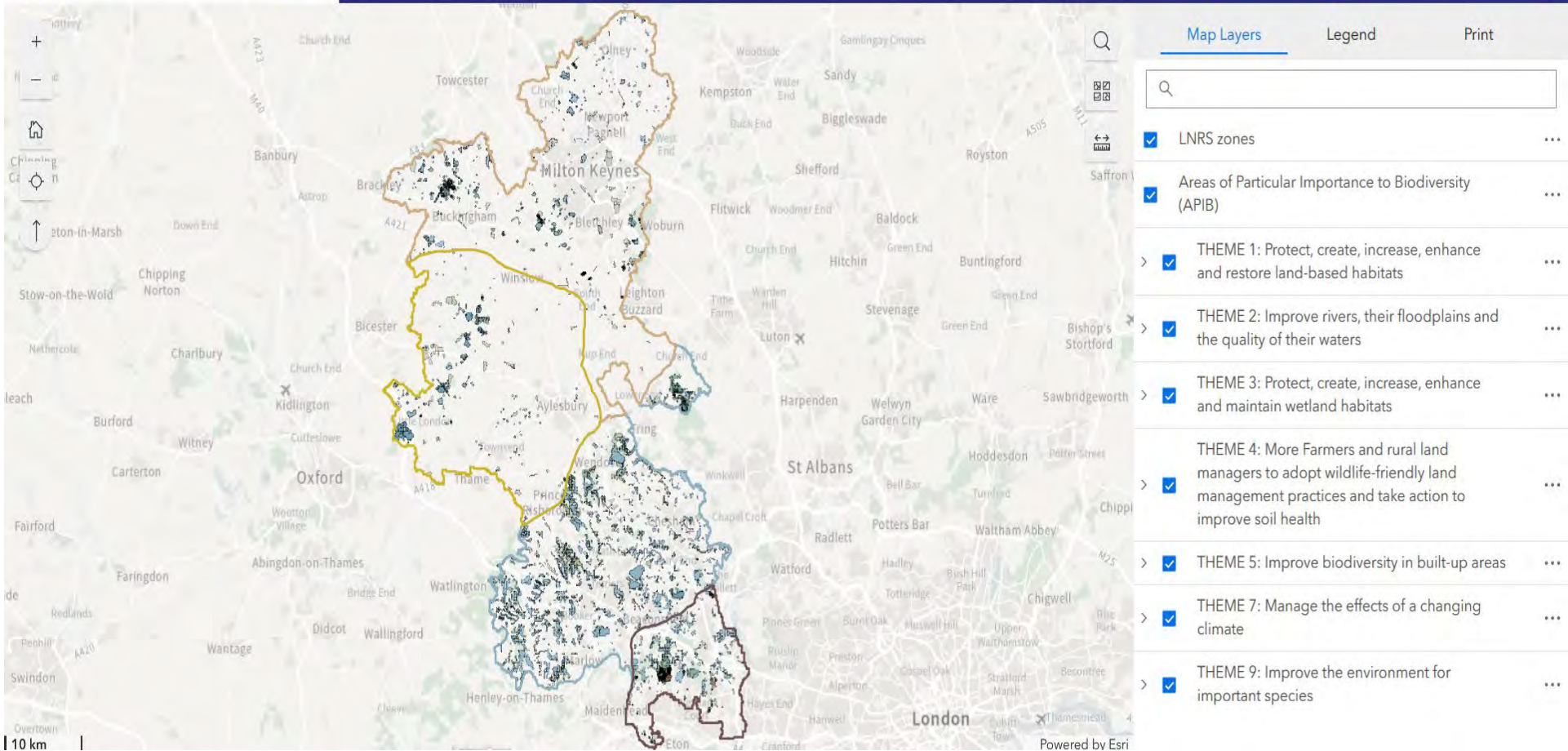


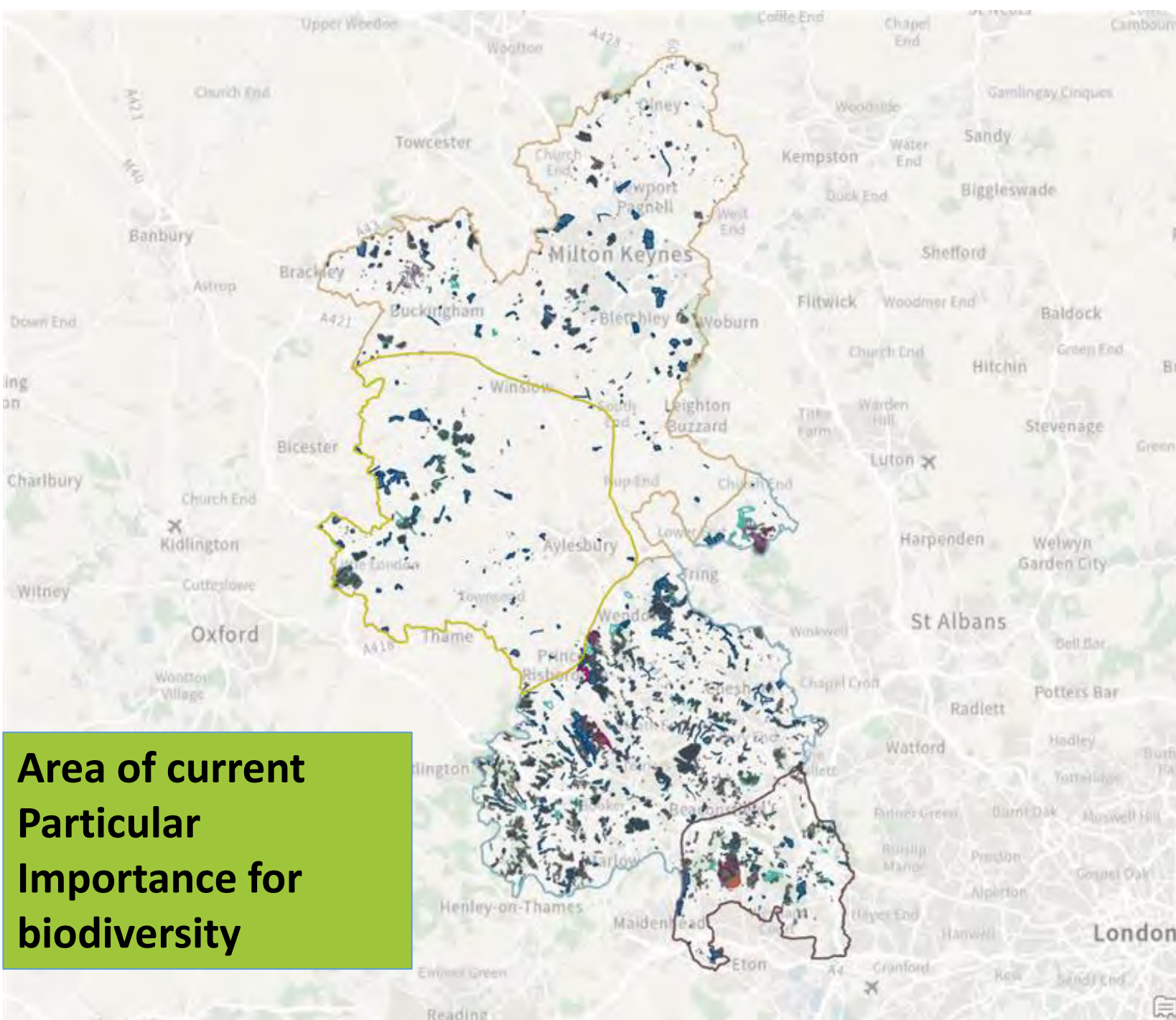
Buckinghamshire & Milton Keynes LNRS

Help ⓘ

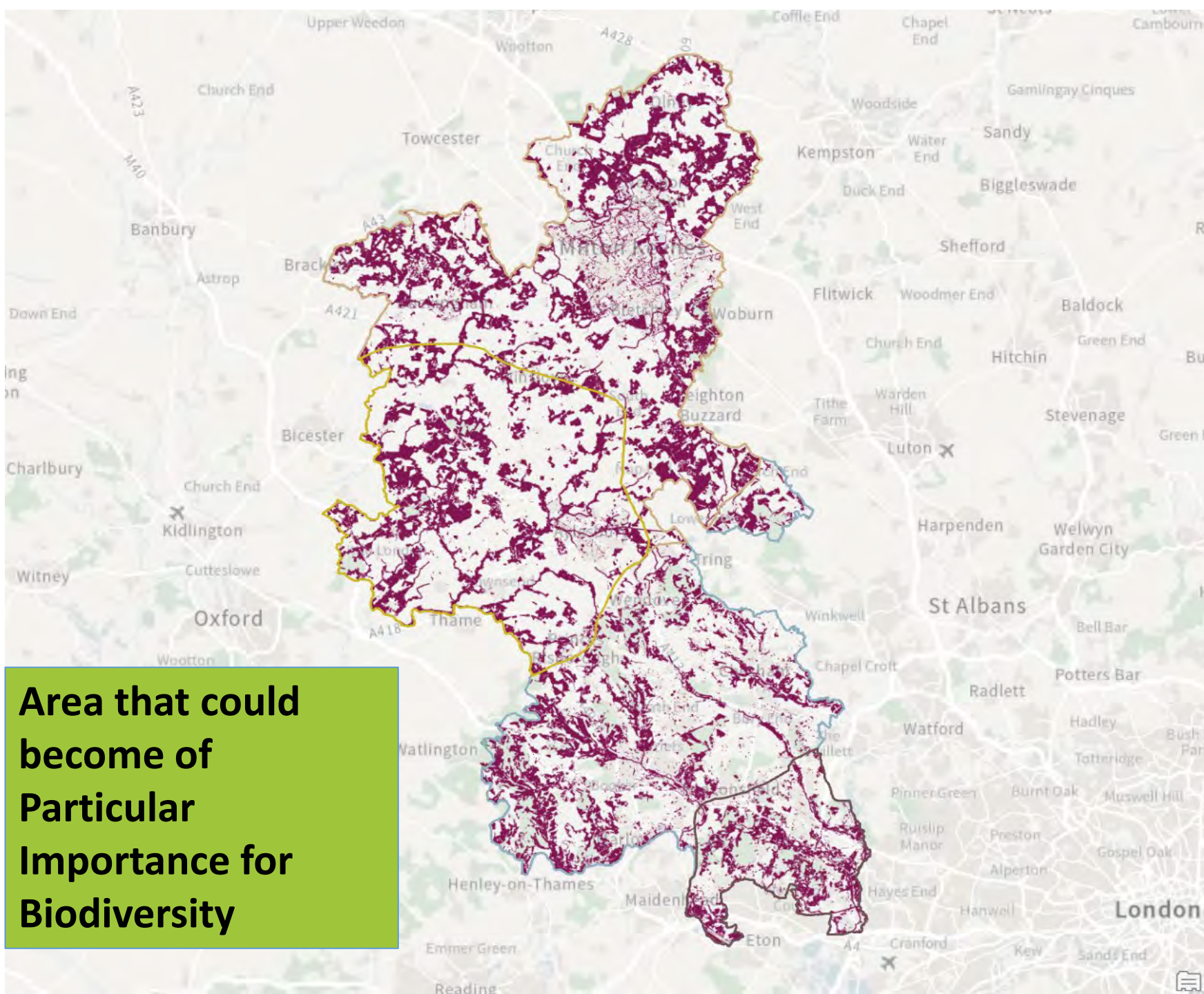
Priorities and Measures ⓘ

Story Map ⓘ

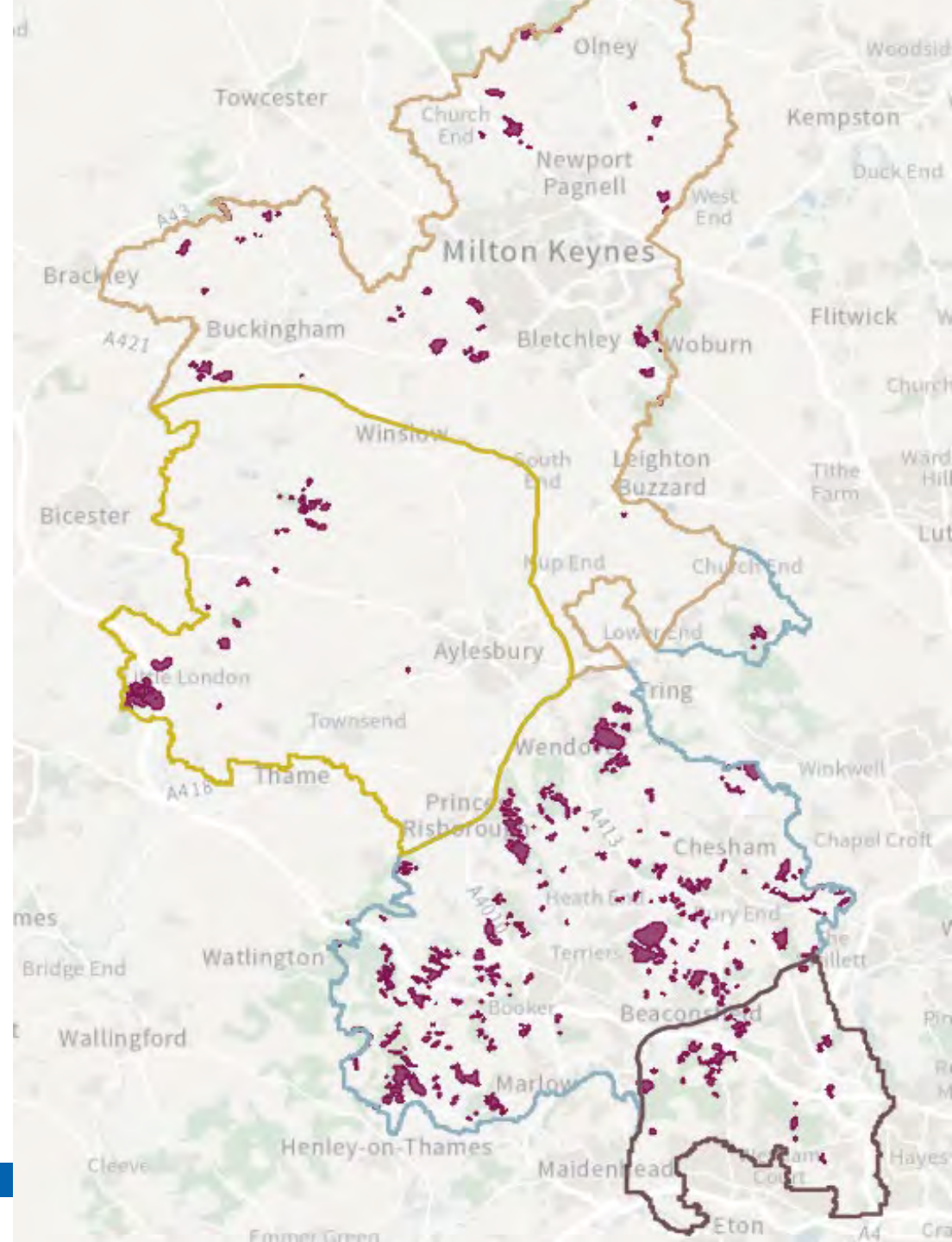


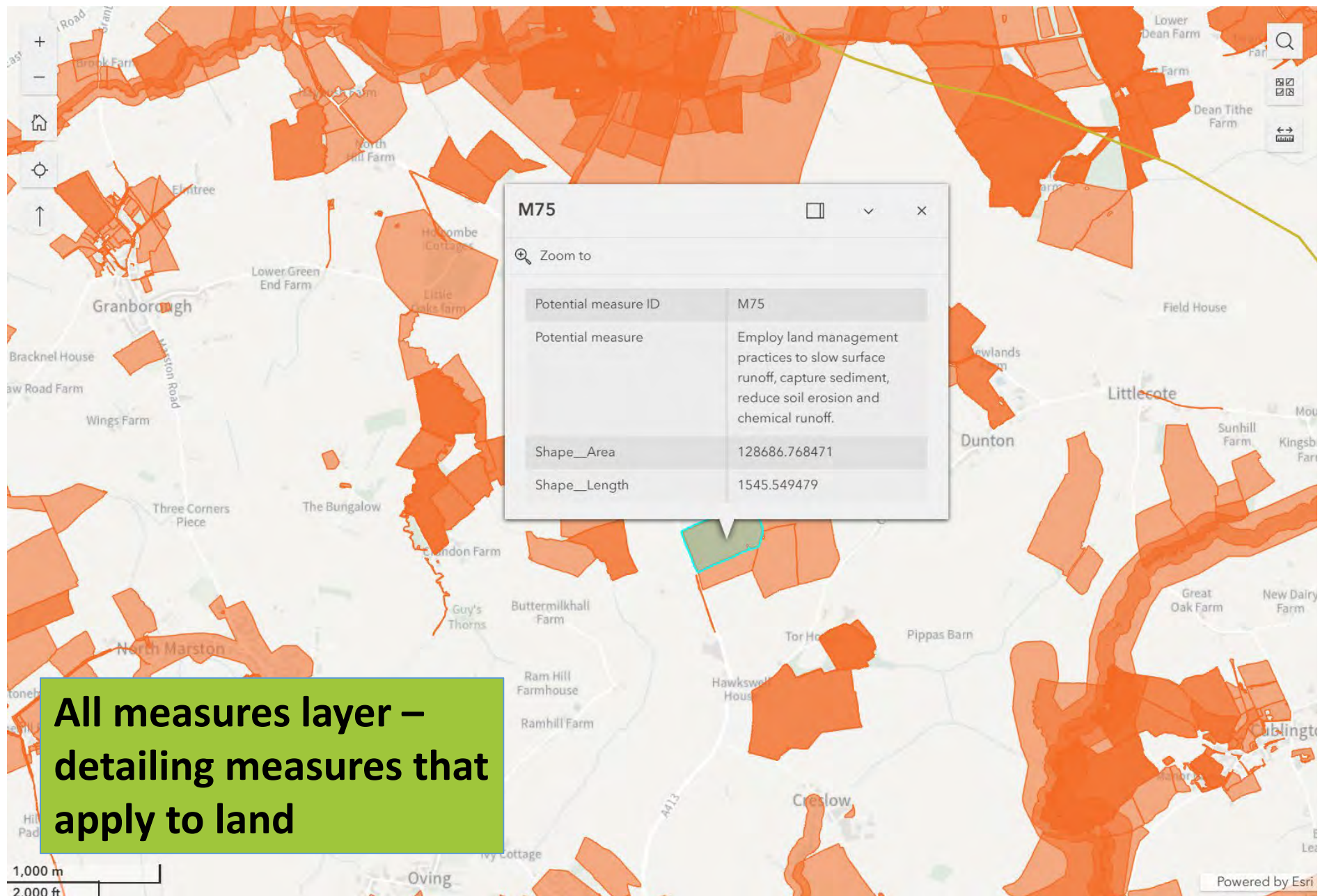


**Area that could
become of
Particular
Importance for
Biodiversity**



Example of a
Mapped measures:
Sensitively convert
plantations on
ancient woodland
sites back to native
broad-leaved
woodlands





Local Nature Recovery Strategy Consultation

The LNRS consultation survey opened on 10th February 2025 and closed on 24th March 2025 and sought views on this draft from residents of **Buckinghamshire and Milton Keynes.**

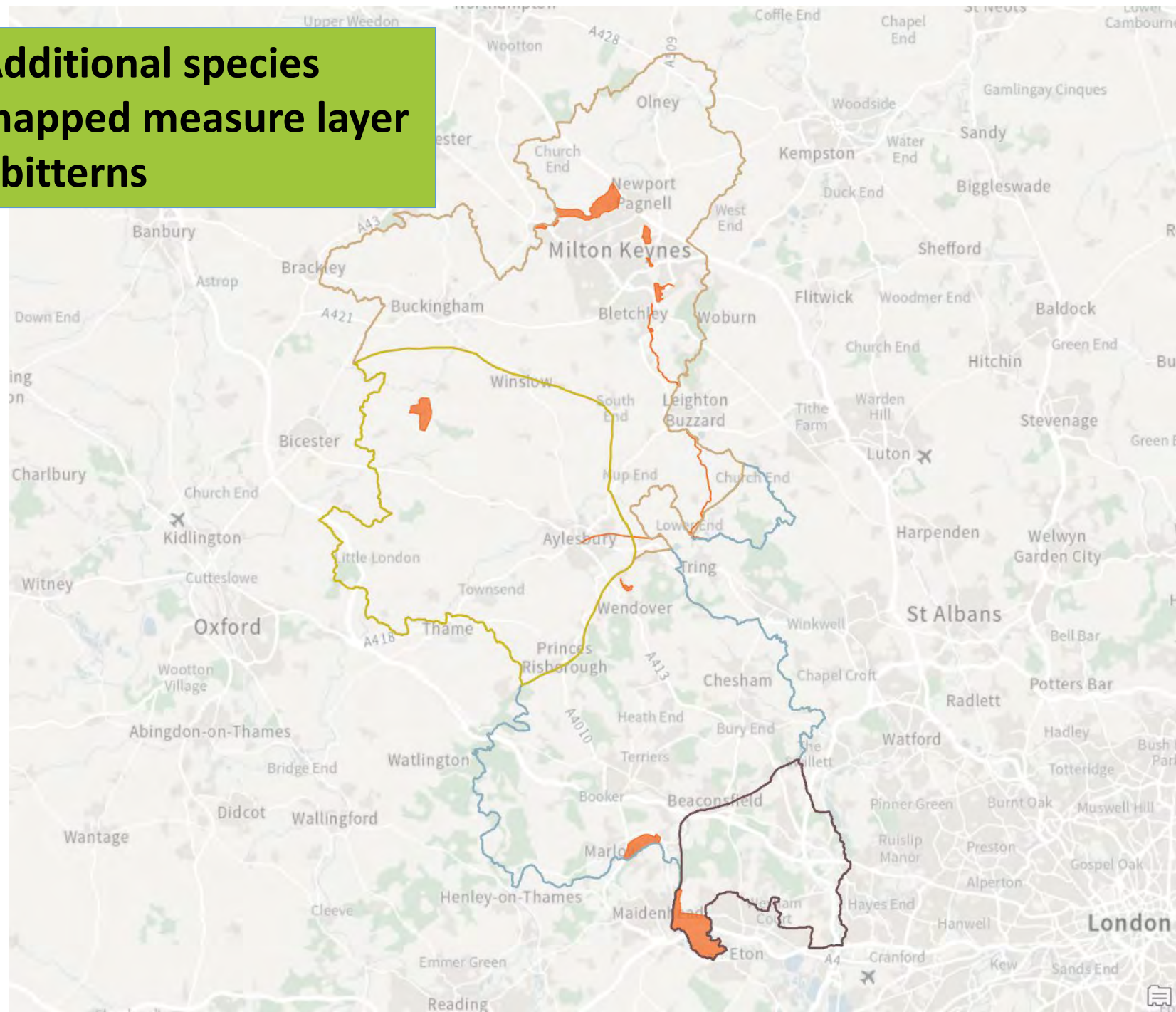
There were **112 respondents to the consultation;**

- **70 individual responses**
- **42 responses on behalf of organisations.**

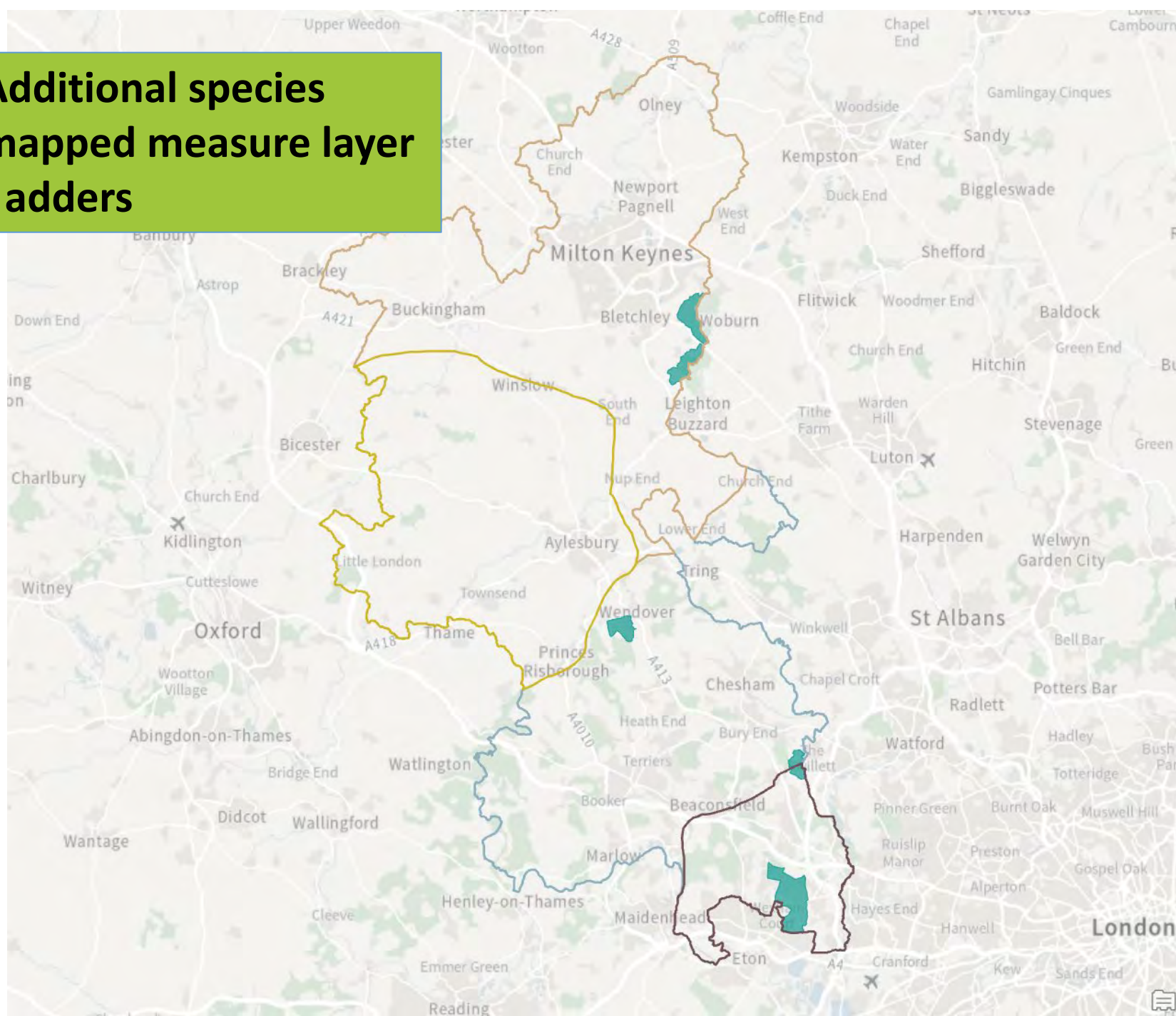
Local Nature Recovery Strategy Consultation

- Response was **broadly warm and positive**
- Welcomed **depth and detail of work**
- **Consensus on direction of travel of species work** - Simplification of species mapping
- **Action on water environment** came through very strongly
- Some additional **sites suggested for inclusion or exclusion** – reviewed using criteria
- **Now undertaking post consultation amends to P&M, mapping and species work**

**Additional species
mapped measure layer
- bitterns**



**Additional species
mapped measure layer
- adders**



Next steps - and timing

- **Send final publication version of LNRS to Supporting Authorities** (MKCC and Natural England) – **(July)**
- Notify neighbouring Responsible Authorities – **(July)**
- **Final version presented to cabinet/key decision for approval-** including summary of all consultation responses and **(September 25)**
- **Notify Secretary of State of intent to publish final LNRS – Sept 25**
- **Publish!**
- Transition to **delivery stage(now onwards)**

LNRS delivery - envisaged activities



Coordinate partnerships and action

Build a **pipeline of projects**

Align funding and investment in nature recovery

Monitoring and reporting on delivery



Update from
Biodiversity and
Nature Recovery
Delivery Groups.

Update from Farmer
Advisor Network

Charlotte Newberry
BBOWT

Biodiversity and NRD Group



Mix of networking between partners and collaborating to facilitate delivery.



Nature Recovery Delivery Group is a sub-group created to focus on delivery of the Biodiversity Action Plan

What have we been doing?



Monitoring

- Satellite monitoring
- Sub group set up
- Scaling up Tracking the Impact



LNRS

- Updates on progress and feedback on the process

Partner Updates

- BMERC
- Waddesdon EcoHub

Biodiversity Opportunity Areas (BOAs)

- Process



Biodiversity Group Funding

- Groundwork South East – Skunk Cabbage Removal

Farmer Advisor Network



Nature Finance

- Biodiversity Net Gain
- Pilio Test and Trial

LNRS

- Regular updates on the process and encouragement to engage
- Ideas on how a 'project prospectus' might work



Government Schemes

- FiPL
- ADOPT



Nature Finance Group Update

June 2025

For information and discussion only - NEP

The NEP's Nature Finance Group

- Aiming to link buyers and sellers of nature recovery projects
- Planned activity to include:
 - Pipeline of projects – marketing brochure
 - Corporate Network
 - Nature Fund
 - Learn from elsewhere
- Supporting Nature Recovery – aligned to delivering the LNRS

Partner organisations include:

The Parks Trust
Rothschild Foundation
CCB,
River Thame Conservation trust,
Bucks Business First
Oxfordshire LNP
Pitchcott Farm
Natural England
Bucks Council
BBOWT

Pipeline of Projects....

Compile case studies and proposed projects – nature projects showcase

- Past projects – demonstrate impacts
- Prospective projects seeking funding
- Anticipated costs and impacts (environmental + wider benefits)



We will be asking for:

Project details – location, aims, impacts, costs

Currently testing a spreadsheet with details....

[HOME](#)[NEWS & EVENTS](#)[WHO WE ARE](#)[WHAT WE DO](#)[BUCKS BUZZING](#)[LOCAL NATURE RECOVERY STRATEGY](#)[PIPELINE OF PROJECTS](#)

Welcome to our project pipeline. Our aim is to align funding sources with nature recovery projects across Bucks and MK, that will help to deliver the Local Nature Recovery Strategy's priorities for local nature.

Here you can see details of projects and the impacts and wider benefits they will bring, etc etc.



Hedgerow Havens

Lead organisation: BBOWT



Project aim: Restore existing linear habitats and create new ones, this project will conserve and protect the wildlife that calls them home.

Project status: Completed

[More information....](#)

Eythrope Wetlands

Lead organisation: RTCT



Project aim: Create high-quality floodplain wetland and grassland habitat and provides clean water where wildlife can thrive with improved resilience

Project status: Completed

[More information....](#)

Reconnecting Bernwood Othmoor Ray

Lead organisation: BBOWT



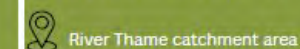
Project aim: To connect habitats at landscape scale creating resilience to threats such as development and climate change alongside developing community custodianship of greenspace across the region

Project status: Funding required

[More information....](#)

Restoring the Thames

Lead organisation: RTCT



Project aim: To restore and re-connect river habitats for resilience, biodiversity, carbon storage, flood management, farming and community benefits.

Project status: Funding required

[More information....](#)

Restoring the Thame



Lead organisation:	River Thame Conservation Trust
Who else is involved:	Landowners and community groups, Central Rivers Trust
Project location:	River Thame catchment area, Buckinghamshire
Overall aim:	To restore and re-connect river habitats for resilience, biodiversity, carbon storage, flood management, farming and community benefits.
Description of works:	Over 200 sites have been identified with opportunities to develop projects delivering a range of headwater, floodplain and river habitat restoration.
Timings:	Start 2026, finish 2036
Amount of funding required:	£??
Key impacts:	

Nature recovery impacts and benefits

????

Local Nature Recovery Strategy priorities supported

????

Wider environmental benefits

????

Social, health and wellbeing benefits

????

<https://www.riverthame.org/habitat-restoration>

To discuss this project further and find out how you can get involved, please contact

[Download PDF](#)

The NEP's Matching Service....

To establish mechanisms for funding the projects pipeline:

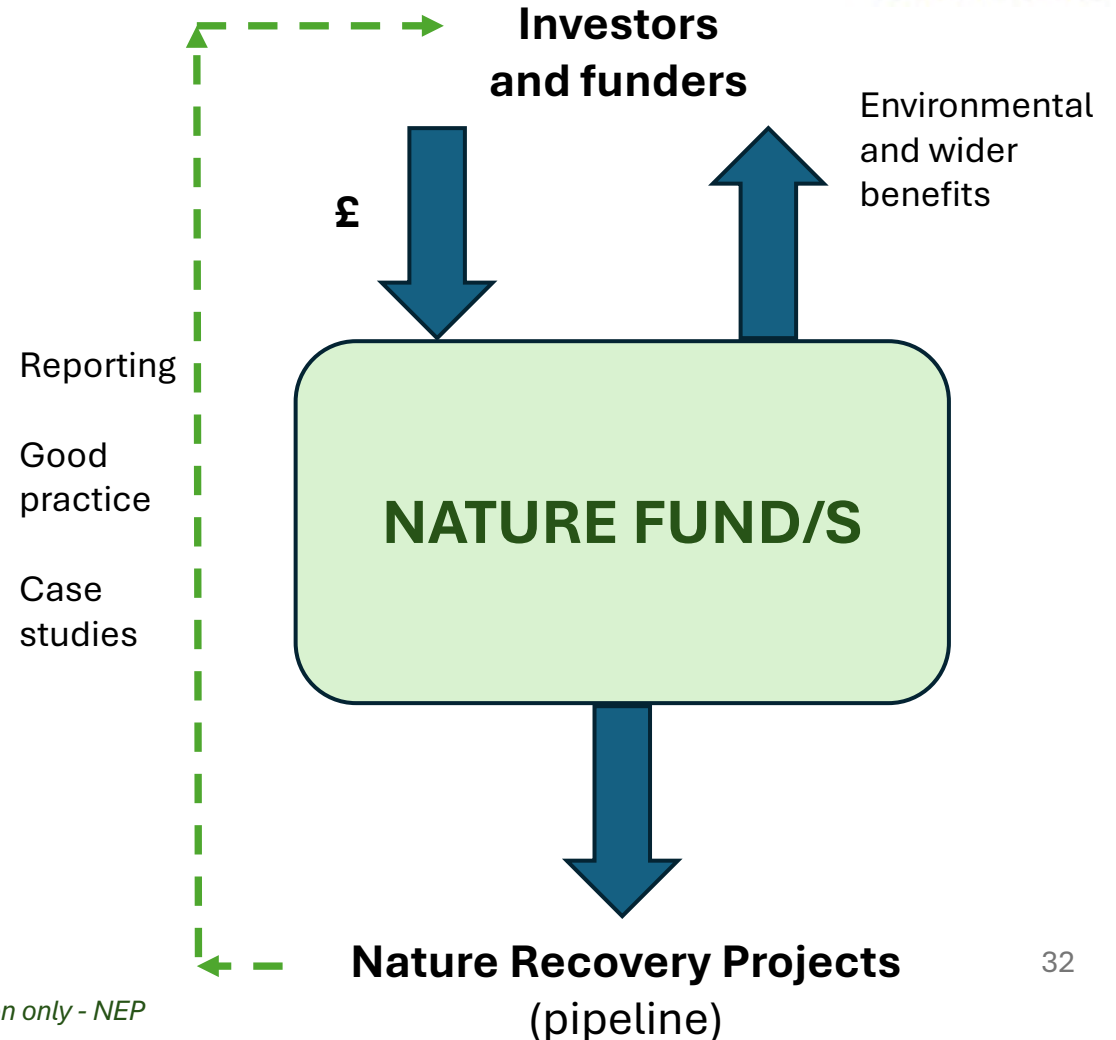
Establish NEP's **MATCHING SERVICE** (funding to nature recovery projects)

- Collate and build on learning from elsewhere
- **Corporate Network** - to share good practice, raise awareness: inaugural network meeting during FY 25-26
- **Nature Funds** and attract contributors to funds



The NEP's new “Nature Fund”

- To support nature recovery projects – with wider benefits
 - Farmers and nature groups
- Aimed at multiple investors:
 - Corporate, Philanthropy, Local Authority, Other
 - To support nature recovery projects – link funders and projects
- Aim to launch during FY 2025/26





The Parks Trust and its role in nature and nature recovery

Victoria Miles CEO



Our mission & values

To provide beautiful parks, lakes, woods, and landscapes that will be loved by the people of Milton Keynes, forever.

Committed

We protect the land, the environment and biodiversity for future generations.

We support action on climate change.

Inspirational

We aspire to be innovative, creative, and forward thinking.

We are a unique self-financing charity model, for the benefit of our communities.

Collaborative

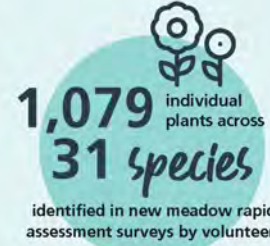
We form relationships to share expertise, collaborate, listen, and learn.

We are one inclusive team and embrace diversity.



Facts & Figures

Here's an insight, in numbers, of some of the measures of our work in managing the city's 6,000 acres of parkland.



Nature recovery runs throughout the Trust



Nature Conservation Volunteering



Nature Conservation Volunteering



New Green Spaces

As Milton Keynes continues to grow as an exciting and well-connected place to live and work, the city and its green spaces are expanding too.

The Parks Trust aims to be the partner of choice for developers, who can gain great advantages with our local knowledge and expertise to ensure that new neighbourhoods benefit from prime landscapes just like other parts of the city. Our goal is to enhance the quality of life for current and future generations while also conserving the local environment and biodiversity.

Once new developments are completed, the associated parklands, ponds, and play areas are often entrusted to The Parks Trust with endowments which we carefully invest to ensure perpetual care and maintenance at no expense to the local community.

In the Financial Year 2024-25, we proudly took on the responsibility of the following new parks and landscapes in Milton Keynes:

- 📍 1 hectare in Eagle Farm, made up of mostly Sustainable Drainage Systems (SuDS) ponds
- 📍 2 hectares of parks and swales in Brooklands
- 📍 A small open space containing a bridleway and an urban square park in Whitehouse, totalling about 0.2 hectares.

Developers can also choose The Parks Trust as a partner for Biodiversity Net Gain (BNG) delivery.

As custodians of over 5,000 acres of parkland, our teams expertly manage the city's landscapes for both people and nature. The Trust continually seeks to enhance the parkland habitats for wildlife and to develop closer connections between people and nature.

To achieve this, the Trust is developing its own in-house Biodiversity Net Gain scheme comprising a wide range of habitats.

We have capacity to meet Biodiversity Net Gain requirements with quality, high integrity BNG units that will benefit both nature and people.



- | | |
|-----------------------------------|--------------------------------------|
| 1. Brooklands Meadow Park | 23. Floodplain Forest Nature Reserve |
| 2. Broughton Brook | 24. Lifford Lakes Nature Reserve |
| 3. Caldecote Brook | 25. Stony Stratford Nature Reserve |
| 4. Campbell Park | 26. Huxley Wood |
| 5. Canal Broadwalk | 27. Howe Park Wood |
| 6. Great Lifford Manor Park | 28. Kingsmead |
| 7. Loughton Valley Park | 29. Lifford Wood |
| 8. Newlands | 30. Shenley Wood |
| 9. Poplar Plantation | 31. Tree Cathedral |
| 10. Stanton Low Park | 32. Globe Farm Wetland |
| 11. Stonyfield Field | 33. Kears Hill Park |
| 12. Tattenhoe Valley Park | 34. Lady Margaret's Grove |
| 13. Auland Lakes | 35. Middleton |
| 14. Caldecote Lake | 36. Ockley Park |
| 15. Foston Lake | 37. Shearling Park |
| 16. Lodge Lake | 38. Whitehouse |
| 17. Taurins Lakes | 39. Kettle |
| 18. Wilton Lake | 40. Oxie Valley Park |
| 19. Wilton Lake (N) | 41. Oxle Valley Park |
| 20. Wilton Lake (S) | 42. Tonds Meadow |
| 21. Wolverton Mill Balancing Lake | 43. Wanshall Park |
| 22. Belford Park Nature Reserve | |

Thank you.



Learn more about us:



Scan below to find out more



Email us
info@theparkstrust.com



Biodiversity Offsetting.

30 Years, Then What?

Problems & Solutions

Magiovinium 2020 Areal:

